



## **FALLING WATERS**

**Written By  
Linda Bird  
Dorothy Burgess  
Ida Lee Knapp**

# **FALLING WATERS**

## **Teacher's Guide**

### **Introduction:**

The purpose of this lesson is to learn some history about some waterfalls and the locations. To encourage you to want to experience the beautiful landscape around our waterfalls. Learn the different types of waterfalls and how some of our waterfalls are formed.

### **Ideas:**

Teachers: Have pictures of waterfalls for them to look at. Use a map to show where the counties are.

### **Enclosures:**

1. The teachers material
2. The members handout
  - A. Types of waterfalls
  - B. Descriptions, location and history of some waterfalls
  - C. Quiz
3. Evaluation

Please be sure to have everyone fill out an evaluation and give to the person responsible for them.

This lesson was presented at The State FCE Annual Meeting in 2003.

The picture on the cover of the teachers material is White River Falls in Wasco County  
The picture on the cover of the members handout is Bridal Veil Falls in Multnomah County

## FALLING WATERS

There is a fascination with waterfalls. We are drawn to them for their beauty, as places of wonder, for relaxation and for inspiration. Waterfalls provide some of earth's most beautiful landscapes.

There is a lot of history around some of the waterfalls. Waterfalls have been around for a long time. The Indians used to do a lot of fishing around the falls, for example, Celilo Falls on the Columbia River, which are now covered up by Lake Celilo, and South Umpqua Falls and Steamboat Falls in the Umpqua Basin.

The Deschutes River was named the Riviere des Chutes (River of the Falls) during the early fur trading period because of the many falls and rapids on it.

Then there is the Columbia River Gorge which is one of the great wonders of the world. The Oregon side is a narrow strip of land that is a little more than a mile wide by 40 to 50 miles long. It has 77 recognized waterfalls. Some of these waterfalls cannot be viewed. The three counties in this gorge are Multnomah, Hood River and Wasco. The gorge boasts over 200 miles of trails most of which were carved out before 1920.

As you can see there is a lot of history and stories about waterfalls. The lesson would be too long to go into all of it. Some of the history will be touched on in the members handout.

**What is a waterfall?** According to **The Reader's Digest Great Encyclopedic Dictionary** "A waterfall is a steep fall of water, as of a stream over a dam or from a precipice; cascade; cataract." **Webster's Collegiate Dictionary 5<sup>th</sup> Edition** says, "Cataract: a waterfall, especially and usually, a large one".

**How do some waterfalls form?** The places that have the most waterfalls are made of volcanic layers from numerous eruptions. The layers, or deposits, originated from numerous sources, each having a different resistance to erosion. They were then uplifted after the volcanic activity stopped. The stream's erosive powers continue to carve the channels that we see today.

Waterfalls also develop when down cutting streams breach through a resistant bedrock layer into the softer material beneath. The height of the waterfall is dependent upon the thickness of the resistant bedrock layer through which the stream erodes.

Some examples of waterfall and volcanic eruptions are: Watson Falls and Toketee Falls in Douglas County. Watson Falls happened when volcanic eruptions produced a hot molten lava flow that filled that valley with hundreds of feet deep basaltic rock. Watson Creek spills over the northern edge of this flow to form Watson Falls. Toketee Falls had molten lava spewed from a vent and flowed like a river through the valley. Basalt columns were formed as the hot lava cooled. The North Umpqua River drops over these formations.

The Columbia Gorge was formed by geological events that shaped that region. As layers of lava cooled, they mainly formed a rock type called basalt, which is relatively resistant to erosion by running water. The Columbia River is powerful enough to erode through this bedrock which made the Columbia Gorge. The streams that come into the Columbia River from the adjacent upland cannot effectively erode the basalt, so their courses are interrupted by the sharp, vertical breaks of the gorge and are seen as spectacular waterfalls. Examples of these falls are Bridal Veil Falls on Bridal Veil Creek and Multnomah Falls on Multnomah Creek.

Some of the counties that the waterfalls are a result of volcanic actions are: Clackamas, Deschutes, Douglas, Grant, Jackson, Jefferson, Hood River, Klamath, Lane, Linn, Marion, Multnomah, Wallowa, and Wasco. There are 25 counties that have waterfalls in them. Out of these 25 the 14 counties above have waterfalls due to volcanic effects.

**Do waterfalls change?** Energy from the plummeting water creates a plunge pool at the base of the waterfalls, eroding a cavity in the softer underlying rock. This process undermines the resistant layer, causing it to break apart, piece by piece, along the cracks and fissures. Through this process, waterfalls gradually migrate upstream. Over the course of thousand of years, this movement can be a few feet to hundreds of feet. One other obvious thing that changes a waterfall is the water flow. Some waterfalls are seasonal.

**If you hike into a waterfall here are some tips to follow.** Stay on the trail to protect fragile vegetation. Pack it in, pack it out. Leave nothing behind. Be sure matches are completely out. Crush all cigarettes, etc, on a bare rock or in mineral soil and dispose of property. Wash with biodegradable soap and away from open water. Stream water is easily contaminated by human or animal wastes. If no toilets are available, try and select a spot at least 200 feet from open water. If you can dig a hole 6-8 inches deep in mineral soil and cover when finished. This will allow the soil to decompose organic material naturally. Remember that some of these waterfalls are on water supplies for towns. Lets keep the environment around waterfalls in good shape for all the plants and animals sightseers.

**Here are some trail and waterfall safety tips.** Only piped water at developed recreation sites should be considered safe to drink. Stay clear of wet, slippery rocks and vegetation. Remain aware of your surroundings when taking pictures. Don't startle other people who are taking pictures around steep terrain. Know each party member's limitations for steep or long trails. Do not stray from fenced observation points or trails in steep areas. Keep informed of current and seasonal conditions of roads and trails leading to waterfalls (contact Forest or BLM offices). Beware of poison oak.

Hope that this lesson will be a guide for you to experience Oregon's beautiful landscapes

## **Note From The Writers Of This Lesson**

The waterfalls are listed in the county that they are in and the counties are listed alphabetically. Hopefully by listing the counties alphabetically will help you find the waterfalls easier.

We found information on 283 waterfalls in 26 counties. Because there are so many waterfalls we are not able to give directions or information on all of them. We have highlighted only a few per county, but have listed all the waterfalls in that county that we have found.

There may be waterfalls that you know about that are not listed in this lesson. The information was hard to come by and if we did not have significant information or know of the waterfall it did not get put on the list.

We were not able to go to see every waterfall that we listed, so we had to rely on the information only. Hopefully this information is correct.

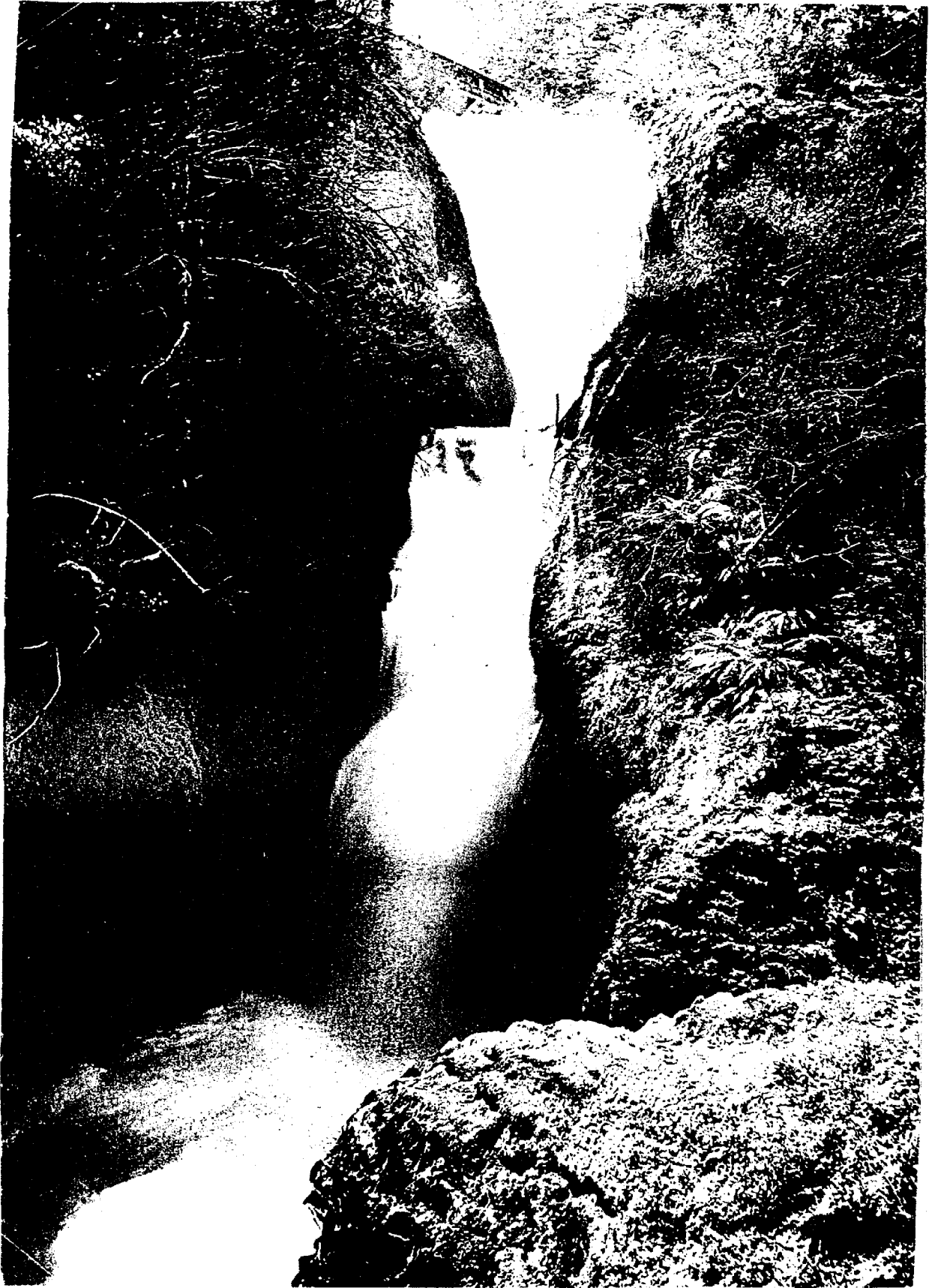
We hope that you enjoy waterfalls as much as we do and that this lesson will be a guide for you to see some that you have not see before.

Enjoy,  
Ida Lee Knapp  
Linda Bird  
Dorothy Burgess

**Falling Waters  
Answers to Quiz**

1. True
2. Answer is B. Most counties in Oregon have at least one Fall Creek, sometimes more.
3. True - Chitwood Creek Falls goes into the ocean. Cascade Head is in Tillamook County.
4. Answer is A. Rogue River is Josephine County.
5. Answer is C. Multnomah Falls is 620 feet, Mist Falls is 500 feet. Both of these falls are in Multnomah County. Salt Creek Falls is 286 feet and is in Lane County.
6. Answer is B, Sahalie Falls. Youngs River Falls was in the movies "Free Willy II" and "Teenage Mutant Ninja Turtle 3".
7. Answer is C, Willamette Falls. If you measure by width (470 feet across), volume of water, volume multiplied by height, width multiplied by height, this is the largest existing waterfall in the Pacific Northwest. It is also .25 mile in length.
8. Answer is A, Crater Lake National Park.
9. Answer is C, Silver Fall State Park in Marion County with South Falls, Lower South Falls, Lower North Falls, Double Falls, Drake Falls, Middle North Falls, Twin Falls, North Falls, Upper North Falls, and Winter Falls.
10. Answer is B, Hole in the Wall Falls. It was 1938 when they moved Warren Creek Falls, because it was washing out the Columbia River Highway. They put a tunnel in an adjacent cliff and moved the Falls and renamed them Hole in the Wall Falls.

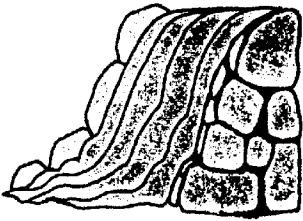
# FALLING WATERS



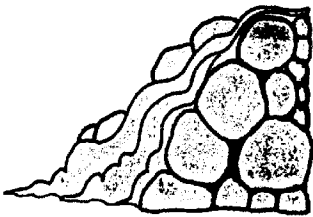
MEMBERS HANDOUT

## WATERFALL TYPES

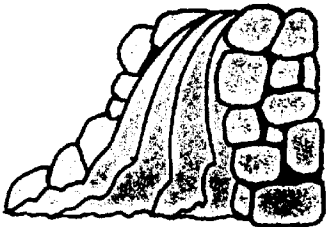
There are different types of waterfalls. Most waterfalls have elements of more than one form. Below are examples of types of falls. The name of these types seem to be used more commonly in the information that was found. In the book **Romance of Waterfalls**, they used different names but basically they mean the same.



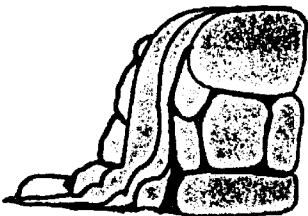
**Block** - The water descends from a wide stream.



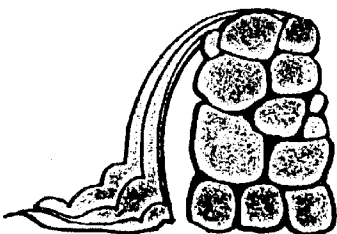
**Cascade** - The water follows along a series of rock steps.



**Fan** - This type is similar to Horsetail, except it has a wide spray as it increases going downward.

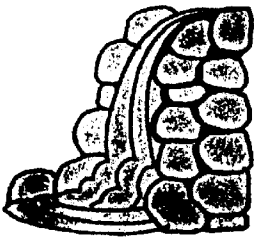


**Horsetail** - The water descends vertically while maintaining some contact with the bedrock surface. It also looks like a horse's tail.

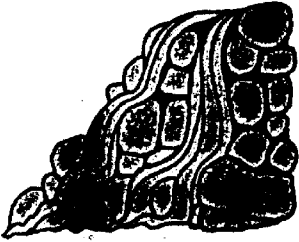


**Plunge** - The water here descends vertically on its own power and loses contact with the bedrock surface.

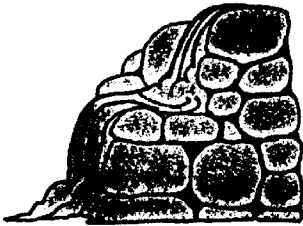




**Punchbowl** - The water here descends from a constricted spot in the stream and falls into a pool below.



**Segmented** - The water for this type descends from the stream into two or three parts. May also be referred to as a twin fall or triplet fall.



**Tiered** - This one descends from a distinct series of separate falls. These falls are seen from one vantage point and can be referred to as a double waterfall or a triple waterfall.

## FALLING WATERS

### Clackamas County

### Minimum 16 waterfalls

**Willamette Falls on Willamette River - 42 feet in height. The falls are block type. The trail to the falls are wheelchair accessible.**

The Willamette Falls are only 42 feet in height, but it is the largest existing waterfall in the Pacific Northwest. If you measure the falls by width, volume of water, volume multiplied by height, width multiplied by height it is the largest. It is 470 feet across and .25 mile in length. The first locks in the west were here so the boats could get around the falls. The first water powered mill in the west was here. This river is the biggest in Oregon and goes through 8 counties. The counties are: Benton, Clackamas, Lane, Linn, Marion, Multnomah, Polk and Yamhill. Directions: The falls can be seen from Interstate 205 eastbound at exit 7. To see the falls closer up take exit 8 at West Linn. Turn right and drive 2 blocks to the West Linn Police Station. You can park here and use the pedestrian walk on the Oregon City Bridge. To see the locks drive further into the Police Station parking lot, then through the gate on left and immediately down the wooden ramp to the paper company parking lot. The best view is from the third floor of the Clackamas County Museum of History.

**Ramona Falls on Sandy River - 50 feet in height. The falls are fan type.**

These falls were named by John E. Mills, who was a Forest Service employee. He supervised a great deal of the trail and bridge building by CCC. Mr. Mills named the falls on August 8, 1933. He was in love and was humming the popular song Ramona, which was from the movie Ramona starring Loretta Young. These falls are the most delightful anywhere and one of the most visited spots in the Mt. Hood area. They are hard to get to in the winter, so check on weather conditions in fall and spring. Directions: Go to Zigzag on Highway 26 and turn onto Lolo Pass Road #18 at Zigzag. It is about 3.75 to 4.9 miles to Muddy Fork Road #1825. Make a right onto this road. Turn right onto Road #100 for 7/10 mile. Go across the Sandy River Bridge. In 1/10 mile bear right on dirt road (marked by Ramona Falls sign), go 1.4 miles on this dirt road to trailhead.

Other waterfalls in Clackamas County:

Devil Canyon Falls on unnamed stream-50-75 ft.; Final Falls on Salmon River-45 ft.; Frustration Falls on Salmon River-55 ft.; Vanishing Falls on Salmon River-30 ft.; Little Niagara Falls on Salmon River-15 ft.; Hideway Falls on Tumbling Creek-100 ft.; Split Falls on Salmon River-25-55 ft.; Stein Falls on Salmon River-75 ft.; The Falls on Eagle Creek-20-30 ft.; Eagle Creek Falls on Eagle Creek-20-30 ft.; Pegleg Falls on Hot Springs Fork-10-15 ft.; Blister Creek Falls on Blister Creek-25-35 ft.; Pup Creek Falls on Pup Creek-100 ft.; Yocum Falls

### Clatsop County

### Minimum 4 waterfalls

**Youngs River Falls on Youngs River - 65 feet in height. The falls are fan type.**

Lieutenant William Robert Broughton named the bay and river on October 22, 1792. He named them after Sir George Young of the Royal Navy. Members of the Lewis and Clark expedition discovered the falls while hunting game during the winter of 1805-06. The movie "Free Willy II" and "Teenage Mutant Ninja Turtle 3" had these falls in it. The Youngs River goes into the Klaskanine Valley. Directions: Take Highway 202 to the town of Olney. At the northwest end of Olney is a sign pointing towards Youngs River Falls. Follow this road for 4 miles to a bridge over the Youngs River. After the bridge make a left and go to the end of the road, which is a parking lot. The trail to the river and base of the falls is 1/10 mile.

Other waterfalls in Clatsop County:

Little Falls on Nehalem River-5-10 ft.; Fishhawk Falls on Fishhawk Creek-60 ft.; Barth Falls, which maybe dry most of the year

### **Columbia County**

### **Minimum 3 waterfalls**

**Beaver Falls on Beaver Creek - 50 feet in height. The falls are plunge type.**

Directions: Beaver Falls is 5 miles west of Rainier. Take Highway 30 to Old Highway 30/Delena Road. Go down Delena Road for about 3.4 miles. You will see Upper Beaver Falls at 1.6 mile. To go to Beaver Falls go to a small pullout immediately next to a large dirt berm and a deep ditch. Park here and go over the berm and walk down the old road to the top of the falls. There is no guardrail so be careful.

Other waterfalls in Columbia County:

Upper Beaver Falls on Beaver Creek-15 ft.; Bonnie Falls on North Scappoose Creek-15 ft.

### **Coos County**

### **Minimum 9 waterfalls**

**Golden Falls on Glenn Creek - found different heights for this fall from 125-375 feet. Two sources say over 300 feet. The falls are Horsetail-Plunge type.**

**Silver Falls on Silver Creek - 120 feet in height. The falls are block-cascade type.**

These spectacular waterfalls are in the Golden and Silver State Park. Golden Falls were named after Coos Bay physician Dr. Charles Golden. Silver Falls goes over an unusual dome shaped projection of weathered bedrock. Directions: From "Y" intersection at south end of Coos Bay on Highway 101, follow sign to Allegany. Cross Isthmus Slough Bridge, turn north on 6<sup>th</sup> Avenue. Go 5/10 mile and turn east on Coos River Road. Following sign to Allegany, cross the Chandler Bridge on North Bank Road. Continue past Allegany 10 miles, following signs to the state park. The trails begin from the parking area.

Other waterfalls in Coos County:

Lower Falls on East Fork Coquille River-15-20 ft.; Middle Falls on East Fork Coquille River-15-20 ft.; Upper Falls on East Fork Coquille River-5-10 ft.; Elk Creek Falls on Elk Creek-75 ft.; Coquille River Falls on South Fork Coquille River-100 ft.; Stull Falls on West Fork Millicoma River; Henry's Falls on Millicoma River-10 ft.

### **Crook County**

### **Minimum 1 waterfall**

**Lost Falls on North Fork Crooked River - 15 feet in height.**

The North Fork Crooked River roars through a narrow basalt canyon over these falls. The falls are in the Wilderness Study Area. The trail is difficult with boulder hopping and stream crossings. Directions: From Highway 26 on the east side of Prineville, turn south ¼ mile west of 20 mile post, there will be a sign for Paulina and Prineville Reservoir. Bear left at the next major junction, which will go to Post and Paulina. Turn north on a gravel road at a sign for Teaters Road, west of the 35 mile post. In 4.5 miles Teaters Road forks and bear left and stay on BLM Road #6578. In 1.4 miles bear right at the forks, drive 1.8 miles and bear right again. Drive ½ mile to a large Wilderness Study sign. There is suppose to be a box with maps in it here. If you have a low clearance vehicle park here and walk. If you drive turn right at this sign and go down hill on an unimproved dirt road. At 1.8 miles is a major junction turn left. Drive ½ mile and park. There are 3 barbed wire fence gates from Teaters Road to falls. Please close gates. (Hopefully these directions are correct.)

### **Curry County**

### **Minimum 4 waterfalls**

The falls that were found here goes into the Rogue River. These falls can be seen from going down the

river and some can be hiked to. The waterfalls are: Stair Creek Falls on Stair Creek; Tate Creek Falls on Tate Creek-50 ft.; Flora Dell Falls on Flora Dell Creek-30 ft.; Kelsey Falls on Kelsey Creek.

### **Deschutes County**

### **Minimum 15 waterfalls**

**Paulina Creek Falls on Paulina Creek - 100 feet in height. The falls are segmented type.**

Paulina Creek is named after a Snake Indian Chief, who didn't seem to have a good reputation. The falls are best seen in spring and early summer. Directions: From La Pine drive 6.2 miles north on Highway 97 to Paulina Lake Road. Drive east on this road for 12.5 miles to the parking area for Paulina Creek Falls, which is 1.1 miles past the park entrance. The trail is easy.

**Tumalo Falls on Tumalo Creek - 97 feet in height. The falls are plunge type.**

The origin of Tumalo is not quite clear. There are several ideas about the word. One idea is from the Klamath Indian word temolo, meaning wild plum. This shrub was once quite plentiful in south central Oregon. Another idea is from the Klamath Indian word temola which means ground fog. The other idea is that the original name was Tumallowa, which means icy water. Directions: From 3<sup>rd</sup> Street in Bend, turn west on Franklin Avenue. Drive 1.2 miles past Drake Park to Galveston Avenue, also known as Tumalo Road. Turn right and drive 10.8 miles along Galveston, which turns into Skyliners Road. Immediately after crossing Tumalo Creek, turn left onto Road #4603. Drive 2.5 miles to the Tumalo Falls parking area. The trail is easy.

Other waterfalls in Deschutes County:

Fall River Falls on Fall River-15 ft.; Benham Falls on Deschutes River-20 ft.; Dillon Falls on Deschutes River-10 ft.; Lava Island Falls on Deschutes River-10 ft.; Middle Paulina Falls on Paulina Creek-50 ft.; Middle Tumalo Falls on Tumalo Creek-60 ft.; Bridge Creek Falls on Bridge Creek-30 ft.; Cline Falls on Deschutes River-10 ft.; Pringle Falls on Deschutes River; Fall Creek Falls on Fall Creek-30 ft.; Squaw Creek Falls on Squaw Creek-30 ft.; Lower Paulina Falls on Paulina Creek-30 ft.; Awbrey Falls on Deschutes River-15 ft.

### **Douglas County**

### **Minimum 40 waterfalls**

**Watson Falls on Watson Creek - 272 feet in height. The falls are plunge type.**

This waterfall is the highest in southwest Oregon. (There is another waterfall that is 600 feet in this county. This fall turned out to be a chute not a waterfall and its name is Alkali Falls.) Watson Falls is named after James Watson. In 1854 he settled on a donation land claim along nearby Fall Creek.

Directions: Take Highway 138 to milepost 60.5, turn south on to Road #37. Trailhead parking is on the right and is a difficult trail.

**Grotto Falls on unnamed fork of Emile Creek - 100 feet in height. The falls are segmented type.**

This fall has a trail behind the waterfall, which has some shallow caves which can be explored. The falls are bigger with heavy snow melt. They were once known as Emile Falls, after Emily Shivigny a native of France, who settled nearby about 1875. Directions: Go to the small town of Glide, which is east of Roseburg. Turn south on the signed Little River Road and go 16 miles to Road #2703 and turn left. Follow Road #2703 for 4.4 miles to Road #2703-150. Should be a sign for Grotto Falls. Turn left onto this road and go 2.2 miles to trailhead just beyond bridge that goes over Emile Creek. At this trailhead there will not be a sign for Grotto Falls. The falls are on an easy 1/3 mile trail.

**Toketee Falls (pronounced Tuck-et-tee) on North Umpqua River-total height 120 feet. The falls are tiered type.**

Toketee Falls are probably the best known falls in Douglas County. They are used as a backdrop for a lot of TV ads and in photography books. There is a 12 foot diameter redwood stave pipe that channels the

majority of the North Umpqua to the Toketee powerhouse a mile downstream. This pipeline can be seen near the parking lot. The word Toketee is a Chinook word which means graceful or pretty. Direction: Take Highway 138 to Forest Road #34. There is a sign for Toketee Falls. Follow this road for 1/4 mile and turn left to trailhead parking area. The trail is a difficult 4/10 mile.

Other waterfalls in Douglas County:

Wolf Creek Falls on Wolf Creek-Total 125 ft.; Cedar Creek Falls on Cedar Creek-125 ft.; Hemlock Falls on Hemlock Creek-70 ft.; Yakso Falls on Little River-70 ft.; Cavitt Creek Falls on Cavitt Creek-10 ft.; Shadow Falls on Cavitt Creek-90 ft.; Susan Creek Falls on Susan Creek-50 ft.; Fall Creek Falls on Fall Creek-85 ft.; Deadline Falls on North Umpqua River-10 ft.; Little Falls on Steamboat Creek-5-10 ft.; Steamboat Falls on Steamboat Creek-25 ft.; Jack Falls on Jack Creek-180 ft.; Whitehorse Falls on Clearwater Creek-30 ft.; Lemolo Falls on North Umpqua River-121 ft.; Warm Springs Falls on Warm Spring Creek-70 ft.; Muir Creek Falls on East Fork Muir Creek-25 ft.; National Creek Falls on National Creek-30-50 ft.; Campbell Falls on South Umpqua River-15 ft.; Deer Lick Falls on Black Rock Fork Creek-20 ft.; Cow Creek Falls on Cow Creek-25-40 ft.; Smith River Falls on Smith River; Canton Creek Falls on Canton Creek-50 ft.; Surprise Falls on North Umpqua River; Fish Lake Creek Falls on Fish Lake Creek-80 ft.; South Umpqua Falls on South Umpqua River; Clearwater Falls on Clearwater Creek-30 ft.; Cathedral Falls are wet weather only; Fern Falls on unnamed creek; Columnar Falls; Unnamed Falls on Rogue River-40 ft.; Rough Rider Falls on Rogue River-50 ft.; Lower Falls on Rogue River-10 ft.; Devils Slide Falls on West Fork Muir Creek; Upper Kentucky Falls on Kentucky Creek-90 ft.; Lower Kentucky Falls on Kentucky Creek-100 ft.; North Fork Smith Falls on North Fork Smith River-120 ft.

### **Grant County**

#### **Minimum 5 waterfalls**

**South Fork Falls on South Fork John Day River - 75 feet in height. The falls are cascade type.**

These falls are located on Bureau of Land Management land in the Ochoco country. The falls are locally known as Izee Falls. This name came about because a local stockman, M. N. Bonham, used the letters I Z for his cattle brand. Directions: From Highway 26 on east side of Prineville, turn south ¼ mile west of 20 mile post, there will be a sign for Paulina and Prineville Reservoir. Bear left at the next major junction, which will go to Post and Paulina. At Paulina take the Paulina-Suplee Highway which goes to the South Fork John Day River Road turn right and head to Izee. Hopefully the falls are around here. The directions were not clear for these falls.

Other waterfalls in Grant County:

Strawberry Falls on Strawberry Creek-75 ft.; Slide Falls on Slide Creek; South Fork Desolation Creek Falls on South Fork Desolation Creek-15 ft.; Mud Falls

### **Hood River County**

#### **Minimum 35 waterfalls**

**Starvation Creek Falls on Starvation Creek - 186 feet in height. The falls are horsetail type. The trail to get to this falls starts in the parking lot and is wheelchair accessible.**

The creek was called Starveout in December 1884, because of two trains that were stranded in the snow near the creek. One story was told that men were paid \$25.00 per day to ski from Hood River to the stranded passengers with food. Another story was that the railroad offered \$3.00 per day to shovel snow to any of the passengers that were willing. Fortunately no one died in this incident. Directions: Turn off Interstate 84 at the east bound exit for Starvation Creek State Park. If you are west bound make a U turn at Wyeth (exit 51), and go back to Starvation Creek State Park. To return west bound go to Viento State Park (exit 56) and make your U turn.

**Hole in the Wall Falls on Warren Creek-100 feet in height. The falls are tiered type. The trail is wheelchair accessible.**

The falls were called Warren Creek Falls. During high water the creek would spray onto the Columbia River Highway and wash it out. In 1938 they decided to move the waterfalls. A tunnel was blasted through the adjacent basaltic cliff. By doing this it diverted Warren Creek and a new waterfall was made with a new name. Directions: Follow the directions to Starvation Creek State Park that are in the previous waterfall. The falls are 6/10 mile on Mt. Defiance Trail #413. You will pass Cabin Creek Falls before Hole in the Wall Falls.

**Lancaster Falls on Wonder Creek - 250 feet in height. The falls are plunge type.**

These falls were named in 1970 from the suggestion of Gertrude C. Jensen and Donald J. Sterling, Jr. They are named after Samuel C. Lancaster, the engineer who designed the Historic Columbia River Highway prior to World War I. Mr. Lancaster also designed the campus at Linfield College in McMinnville in 1908. The Columbia River Highway opened in 1915. Directions: Follow the directions to Starvation Creek State Park that are in the previous waterfall. From the parking area at Starvation Creek State Park go to Mt. Defiance Trail #413 and walk about 8/10 mile on this trail to Lancaster Falls. There are other falls before you get to Lancaster Falls.

Other waterfalls in Hood River County:

Ruckel Creek Falls on Ruckel Creek-50 ft.; Wauna Falls on unnamed creek-200 ft.; Eagle Creek Falls on Eagle Creek-110 ft.; Metlako Falls on Metlako Creek-108 ft.; Punch Bowl Falls on Eagle Creek-50 ft.; Loowit Falls on Loowit Creek-125 ft.; Benson Falls on Eagle Creek-12 ft.; Skoonichuk Falls on Eagle Creek-30 ft.; Tenas Falls on unnamed creek-20 ft.; High Bridge Falls on Eagle Creek-15 ft.; Sorenson Falls on Sorenson Creek-125 ft.; Wy'east Falls on unnamed creek-130 ft.; Tunnel Falls on East Fork Eagle Creek-120 ft.; Dry Creek Falls on Dry Creek-70 ft.; Pacific Crest Falls on unnamed tributary of Herman Creek-40 ft.; Falls Creek Falls on Falls Creek-125 ft.; Slide Creek Falls on Slide Creek-100 ft.; Gorton Creek Falls on Gorton Creek-140 ft.; Camp Creek Falls on Camp Creek-150 ft.; Cabin Creek Falls on Cabin Creek-170 ft.; Lower Lindsay on Lindsay Creek-60 ft.; Summit Creek Falls on Summit Creek; Wah Gwin Gwin Falls on Phelps Creek-207 ft.; Punchbowl Falls on West Fork Hood River-30 ft.; Lower Punch Bowl Falls on Eagle Creek-20 ft.; Dead Point Creek Falls on Dead Point Creek-115 ft.; Switchback Falls on North Fork Iron Creek-100-200 ft.; Sahale Falls on East Fork Hood River-100 ft.; Umbrella Falls on East Fork Hood River-60 ft.; Tamanawas Falls on Cold Springs Creek-150 ft.; Wallalute Falls on Eliot Branch-100 ft.; Pencil Falls, Teapot Spring Falls-40 ft.

### **Jackson County**

#### **Minimum 5 waterfalls**

**Mill Creek Falls on Mill Creek - 174 feet in height. The falls are plunge type.**

Mill Creek Falls are very well known in this county. Was told that they got their name because a mill was beside the creek. Boise Cascade Corporation has constructed public trails to these falls. There is some steep spots so don't know if they are wheelchair accessible. Directions: Take Highway 62 to Prospect. Turn onto Mill Creek Road. There is also signs for Mill Creek Falls on Highway 62. Park at Mill Creek Falls Trailhead on Mill Creek Road.

Other waterfalls in Jackson County:

Barr Creek Falls on Barr Creek-175 ft.; Peasony Falls on Mill Creek-15 ft.; Lower Red Blanket Falls on Red Blanket Creek-90-140 ft.; Butte Falls on Butte Creek-15 ft.; Union Creek Falls on Union Creek-10 ft.

### **Jefferson County**

#### **Minimum 2 waterfalls**

**Steelhead Falls on Deschutes River - could not find height or fall type.**

These falls are popular with fisherman and falls were named for the Steelhead Trout. Directions: Go to Terrebonne on Highway 97. Just north of Terrebonne turn west on Lower Bridge Road, which is marked by a sign for Crooked River Ranch. Proceed 6 miles to river. There are dirt roads behind Crooked River Ranch that go to Steelhead Falls.

Other waterfalls in Jefferson County:

Wizard Falls is in this county but they have been diverted because of Wizard Falls fish Hatchery.

### **Josephine County**

#### **Minimum 7 waterfalls**

**Silver Falls on Silver Creek - 60 feet in height.**

These falls might take an explorers attitude to find. The roads are poorly marked and in wet weather muddy. Directions: From Interstate 5 go to Merlin (exit 61). Go through Merlin to Galice and 3/10 mile before Galice turn west on Galice Access Road. Stay on this road for 9.5 miles to a 5 way junction, turn left on Road #35-9-1 for 4.2 miles. At the fork turn left on a rough road (#050) for 6 miles to its end.

There is a trailhead here which leads to the falls. It is an easy 1 mile hike.

Other waterfalls in Josephine County:

Grave Creek Falls on Grave Creek-5 ft.; Upper Black Bar Falls and Lower Black Bar Falls; Rainie Falls on Rogue River-15 ft. (all of the above falls are on the Rogue River); Illinois River Falls on Illinois River-10 ft.; Fall Creek Falls on Fall Creek

### **Klamath County**

#### **Minimum 6 waterfalls**

**Vidae Falls on Vidae Creek - 100 feet in height. The falls are tiered type.**

If you are going to Crater lake National Park, check out this fall along with four other falls in or near the park. Vidae Falls are a popular stop. Directions: Go to Crater Lake National Park and head towards the park headquarters, along Rim Drive. The falls are 3 miles southeast of the park headquarters and are alongside the road at a turnout.

Other waterfalls in Klamath County:

Annie Falls on Annie Creek-40 ft., Duwee Falls-70 ft., and Lightning Springs Falls on Lightning Creek are in Crater Lake National Park. These falls are not in the park - Stuart Falls on Red Blanket Creek-40 ft. and Red Blanket Falls on Red Blanket Creek-40 ft.

### **Lake County**

#### **Minimum 2 waterfalls**

**DeGarmo Falls - 35 feet in height.**

Directions: Take Road #3-12 from Plush 10 miles to a "DeGarmo Canyon" pointer. Back up 100 yards and take this rough dirt road uphill for 3/10 mile to road's end and a parking area. Follow the trail into the canyon's mouth for 7/10 mile to the falls. The path ends at the falls.

Other waterfalls in Lake County:

Deep Creek Falls-20 ft.

### **Lane County**

#### **Minimum 32 waterfalls**

**Salt Creek Falls on Salt Creek - 286 feet in height. The falls are plunge type. There is a viewpoint from parking lot which is wheelchair accessible. There is a trail that goes down to the base of the falls. This trail may not be wheelchair accessible.**

The first person other than an Indian to see the falls was Frank S. Warner in March 1887. An Indian by the name of Charles Tufti showed him the falls and canyon. Charles was staying with the Warners. Salt Creek got its name because of it numerous salt springs, which were used by animals and humans. This is

A very impressive and powerful waterfall. Directions: Twenty-one miles east of Oakridge on Highway 58. Look for signs for Salt Creek Falls Picnic Area.

**Diamond Creek Falls on Diamond Creek - 100 feet in height. The falls are fan type.**

Directions: From Salt Creek Falls Picnic Area take the Diamond Creek Falls Trail #3598 along Salt Creek Canyon Trail for 1.3 miles to the signed Diamond Creek Falls spur trail. You can see the falls at the end of the trail or a viewpoint about 200 feet upstream. You will get a glimpse of Lower Diamond Creek Falls on this trail.

**Proxy Falls on Proxy Creek - 200 feet in height. The falls are fan type**

Directions: Take Highway 242, 8.9 miles east of junction with Highway 126. These falls are about 28 miles west of Sisters along Highway 242. Park along the side of the road at the marked trail for Proxy Falls. Go counter-clockwise direction on the trail which will take you to Proxy Falls and then Upper Proxy Falls. This is a popular trail. The trail is an easy 8/10 mile round trip. Highway 242 maybe closed from Sisters in the winter. If you come from Highway 126 you maybe able to see the falls year around.

Other waterfalls in Lane County:

Suislaw Falls on Suislaw River-5-10 ft.; Chichester Falls on Andy Creek-20-30 ft.; Blue Hole Falls on Brice Creek-15 ft.; Wildwood Falls on Row River-15 ft.; Salmon Creek Falls on Salmon Creek-5-10 ft.; Lillian (Lithan) Falls on Nettie Creek-50-100 ft.; Lower Diamond Creek Falls on Diamond Creek-250 ft.; Lower Falls Creek Falls on Fall Creek-30-50 ft.; Evergreen Falls on unnamed creek-20 ft.; Spirit Falls on Alex Creek-50 ft.; Falls Creek Falls on Falls Creek-40 ft.; Upper Fall Creek Falls on Falls Creek-40 ft.; Upper Fall Creek Falls on Falls Creek-50-80 ft.; Rainbow Falls on Rainbow Creek-150-200 ft.; Upper Falls 100-125 ft.; Trestle Creek Falls on Trestle Creek-30 ft.; Smith Falls on Champion Creek; Obsidian Falls on Obsidian Creek-30 ft.; Parker Creek Falls on Parker Creek; Erma Bell Falls between Upper and Middle Erma Bell Lakes; Goodman Creek Falls on Goodman Creek-small; Upper Proxy Falls on unnamed creek-150 ft.; Brice Creek Falls on Brice Creek-3 falls at 5-10 ft. each; Moon Falls on Layng Creek-125 ft.; Upper Parker Falls on Parker Creek-40 ft.; Lower Parker Falls on Parker Creek-35 ft.

**Lincoln County**

**Minimum 5 waterfalls**

**Drift Creek Falls on Drift Creek - 75 feet in height.**

Directions: Take Forest Road #17 east of Lincoln City from Highway 18 at Rose Lodge. Turn South onto Bear Creek Road (which becomes 17) and follow signs for falls for 9 miles. When you come to a high bridge the creek level viewpoint is another ¼ mile. The trail is steep. You may need a Forest Trailhead Pass.

Other waterfalls in Lincoln County:

Fall Creek Falls on Fall Creek-5-10 ft.; Alsea Falls on South Fork Alsea Creek-30 ft.; Green Peak Falls on Peak Creek-45 ft.; Euchre Falls on Euchre Creek-10 ft.

**Linn County**

**Minimum 20 waterfalls**

**Sahalie Falls on McKenzie River - 150 feet in height. The falls are plunge type. The trail is wheelchair accessible.**

There are two Sahalie Falls in Oregon. The other one is in Hood River County and is spelled without the i. Sahalie is a variant spelling of the Chinook jargon word for high. These falls were known as Upper Falls before the Clear Lake Recreation Area was developed. Their name was changed to Sahalie in 1950. This is the highest waterfalls on the McKenzie River. These falls were featured in the Disney movie "Homeward Bound". Directions: Take Highway 126, 5.3 miles south of junction with Highway 20. Park in a well signed turn off.



**Koosah Falls on McKenzie River - 120 feet in height. The falls are segmented type. You can walk from Sahalie Falls to Koosah Falls but there are stairs on it.**

Koosah is a Chinook word meaning sky. It was once known as Middle Falls. It was between Sahalie Falls and Tamolitch Falls. Tamolitch Falls are now extinct due to Carmen Reservoir. Directions: Take Highway 126, 5.7 miles south of junction with Highway 20. They are 4/10 mile south of Sahalie Falls. Park in a well sign turn off for Koosah Falls. (One direction said that you could park in Ice Cap Campground.)

**Lower Soda Creek Falls on Soda Creek - 175 feet in height.**

The valley of South Santiam River has been known for its mineral springs. Soda Creek is in Cascadia State Park. In 1895, a health resort was founded at the mouth of Soda Creek by Mr. Geisendorfer, who took advantage of the mineral springs. In the 1940's the State of Oregon purchased this land and made Cascadia State Park. Directions: Take Highway 20 to Cascadia State Park.

Other waterfalls in Linn County:

Rainbow Falls on Dobbin Creek-25 ft.; Lower McDowell Creek Falls on McDowell Creek-15 ft.; Royal Terrace Falls on Fall Creek-119 ft.; Crystal Pool Falls on McDowell Creek-20 ft.; Majestic Falls on McDowell Creek-55 ft.; Coal Creek Falls on Coal Creek-40-60 ft.; High Deck Falls on unnamed creek-100 ft.; House Rock Falls on South Santiam River-20-30 ft.; Whispering Falls on Misery Creek-60 ft.; Gatch (Gooch) Falls on Marion Creek-75 ft.; Drowning Creek on Drowning Creek; Soda Creek Falls on Soda Creek; Cascade Falls on Wiley Creek-8 ft.; Thomas Creek Falls on Thomas Creek-40 ft.; Tomco Falls on South Santiam River-8 ft.; Shelter Falls on Middle Santiam River-20 ft.

## **Marion County**

### **Minimum 25 waterfalls**

**Opal Falls on Opal Creek - 250 feet in height.**

Opal Creek Valley includes 50 waterfalls in it. (Was not able to get the names or information about these waterfalls.) Directions: Take Highway 22 to just west of Mehama. Follow a sign for the Elkhorn Recreation Area, turn north on Little North Fork Road at a flashing yellow light between the State Forestry Department building on the north side of Highway 22 and the Swiss Village Restaurant across the road. Drive 21 miles up the Little North Fork Santiam River. In 15 miles this road becomes Forest Road #2207. At the only major fork in the road, bear left. Park at the locked gate at the end of the road. It is about 4 miles from locked gate. You will be going through Jawbone Flat and cross Battle Ax Creek, turn right and go by mining camp's building. When you see white plastic water pipe that marks Opal Creek Trail. Follow trail into forest alongside water line. The path goes down to the edge of a small boulder line creek. Cross the stream before reaching the end of the water line, follow the trail up a ridge and the trail enters Opal Creek drainage and comes to the falls. (A trail is planned from Jawbone Flat to Opal Lake along Opal Creek.)

**South Falls on South Fork Silver Creek - 177 feet in height. The fall are plunge type. It is wheelchair accessible.**

Falls City was once near South Falls. The residents of this town publicized and popularized it before it had trails or bridges. The town was destroyed and the residents sent packing when the park was created. There is a display in the lodge about this town. South Falls is in Silver Falls State Park. There are 10 waterfalls in this park. If you like waterfalls and hiking this is the place to go. South Falls is the easiest falls to get to. The trail down to the base is steep and narrow so it may not be good for wheelchairs. You can go behind the falls at the base. Directions: Take Highway 214 to Silver Falls State Park, about 25 miles east of Salem. Park in the South Falls parking area. There is a day use fee.

**Butte Creek Falls on Butte Creek - 100 feet in height. The falls are horsetail type.**

This spectacular waterfall is a highlight of the Butte Creek Falls Trails. Directions: From the town of Silverton go north on Highway 213 for about 5 miles to Mt. Angel-Scotts Mills Road, turn right following sign for Scotts Mills. Go 2.5 miles to Scotts Mills, turn right onto Crooked Finger Road. On this road you will have 9.6 miles of pavement, then gravel for 2 miles. At the 2 mile mark (marker is painted on a tree stump), turn left onto road CF #400. Go on this road for 1.95 miles to a parking area on the left. There is a small plastic trail sign pointing the way. Follow trail downhill then take left fork (heading downstream). You will pass the top of the falls.

Other waterfalls in Marion County:

Lower North Falls on North Fork Silver Creek-30 ft.; Winter Falls on Winter Creek-136 ft.; Upper North Falls on North Silver Creek-65 ft.; North Falls on North Fork Silver Creek-136 ft.; Twin Falls on North Fork Silver Creek-31 ft.; Middle North Falls on North Fork Silver Creek-106 ft.; Drake Falls on North Fork Silver Creek-27 ft.; Double Falls on unnamed tributary-178 ft.; Lower South Falls on South Fork Silver Creek-93 ft.; Stasel Falls on Stout Creek-100-125 ft.; Drift Creek Falls on East Drift Creek-60 ft.; Upper Butte Creek Falls on Butte Creek-22 ft.; Lower Shellburg Falls on Shellburg Creek-20-40 ft.; Shellburg Falls on Shellburg Creek-80-100 ft.; Frenchie Falls on Frenchie Creek-48 ft.; Salmon Falls on Little North Santiam River-35 ft.; Henline Falls on Henline Creek-100 ft.; Sullivan Creek Falls on Sullivan Creek-60 ft.; Sevenmile Creek Falls on Sevenmile Creek; McKay Falls on Butte Creek-15 ft.; Whispering Falls on Misery Creek-60 ft.; Sawmill Falls on Little North Santiam River-15 ft.

## **Multnomah County**

### **Minimum 25 waterfalls**

**Multnomah Falls on Multnomah Creek - 620 feet in height. The fall is tiered-plunge type. The trail is wheelchair accessible.**

The best known waterfall in this county is Multnomah Falls. Even people who are not waterfall lovers, know of these falls. The falls are very popular with photographers, the most visited, and the tallest in Oregon. There doesn't seem to be a written history on the name, but they were called Multnomah Falls in the 1860's. There is an Indian legend about Multnomah Falls. "Many years ago, a terrible sickness came over the village of the Multnomah people and many died. An old medicine man of the tribe told the chief of the Multnomahs that a pure and innocent maiden must go to a high cliff above the Big River and throw herself on the rocks below and this sickness would leave at once. The chief did not want to ask any maiden to make the sacrifice. But when the chief's daughter saw the sickness on the face of her lover, she went to the high cliff and threw herself on the rocks below and the sickness went away. As a token of the maiden's welcome by the Great Spirit, a stream of water, silvery white, streamed over the cliff and broke into a floating mist along the face of the cliff. Even today, as you carefully watch, the maiden's face can be seen in the upper waterfall as the breeze gently rustles the watery strands of her silken hair."

Directions: The Columbia Gorge Scenic Highway is accessible from Interstate 84 for east bounders at Troutdale (exit 17), Lewis and Clark State Park (exit 18), Corbett (exit 22), or Bridal Veil (exit 28). Westbounders get off at Dodson (exit 35) or Warrendale (exit 37). For Multnomah Falls Rest Area use exit 31.

**Elowah Falls on McCord Creek - 289 feet in height. The falls are plunge type. Trail not wheelchair accessible.**

They were named by a committee representing the Mazamas, a regional association of outdoor recreationists, and other outdoor organizations in 1915. The name is Indian but couldn't find a meaning for it. The falls are in the John B. Yeon State Park. Directions: Drive east from Horsetail Falls to the first interchange with I-84 and the old Scenic Highway, but instead of getting on I-84, turn right at the road that is signed for the town of Dotson. Go along this road, which parallels I-84 for about 2 miles, to a

large parking lot just before the road joins I-84 at ramp exit 37. This should be John B. Yeon State Park. Heading west exit I-84 at exit 37, turn left and go to parking lot. The trail forks in 3/10 miles. The right fork goes uphill for an aerial view of the falls and the left fork goes to the base of the falls.

**Wahkeena (Wah-kee-hah) Falls on Wahkeena Creek - 242 feet in height. The falls are tiered type. The trail is wheelchair accessible to middle of falls but not to the top.**

The name is a Yakima Indian word meaning "most beautiful". These falls were known as Gordon Falls, for F. E. Gordon who was a pioneer landowner. There was already a Gordon Creek near Sandy River and at Cascade Locks, so the name was changed. The Mazamas in 1915 changed the name of the falls and creek to Wahkeena. Directions: The falls are 5/10 mile west of Multnomah Falls. If you are coming from I-84, turn off at the Bridal Veil exit. Go east along the Scenic Highway for about 1 mile to the sign for the falls. There is a picnic area on the opposite side of the road. You can view the falls from the road and parking lot.

Other waterfalls in Multnomah County:

Latourell Falls on Latourell Creek-249 ft.; Upper Latourell Falls on Latourell Creek-100 ft.; Sheppards Dell Falls on Young Creek-150 ft.; Bridal Veil Falls on Bridal Veil Creek-140 ft.; Coopey Falls on Coopey Creek-175 ft.; Mist Falls on Mist Creek-500 ft.; Necktie Falls on Wahkeena Creek-30 ft.; Fairy Falls on unnamed tributary of Wahkeena Creek-30 ft.; Dutchman Falls on Multnomah Creek-total 60 ft.; Weisendanger Falls on Multnomah Creek-90 ft.; Upper Multnomah Falls on Multnomah Creek-20 ft.; Double (can be called Hidden or Ecola) Falls on Multnomah Creek-100-200 ft.; Oneonta Falls on Oneonta Creek-100 ft.; Lower Oneonta Falls on Oneonta Creek-75 ft.; Triple Falls on Oneonta Creek-135 ft.; Horsetail Falls on Horsetail Creek-176 ft.; Ponytail Falls on Horsetail Creek-125 ft.; Upper McCord Creek Falls on McCord Creek-100 ft.; Upper Oneonta Falls on Oneonta Creek-55 ft.; Munra Falls on unnamed tributary of Tanner Creek-60 ft.; Wahclella Falls on Tanner Creek-100 ft.; Little Multnomah Falls on Multnomah Creek-15 ft.

### **Polk County**

### **Minimum 2 waterfalls**

**Falls City Falls on Lukiamute River - 35 feet in height.**

Falls City was named for the falls sometime before 1889, possibly at the suggestion of a family which emigrated from Falls City, Nebraska. There was a suggestion that you might see a face in the falls, maybe Chief Lukiamute. Directions: Take Highway 223 to Falls City Road and turn west and go to Falls City. In Falls City take South Main Street to Michael Harding Park. The park is just across a bridge and turn right. When you are at the park look across the street to a wide spot and walk down to the falls here.

Other waterfalls in Polk County:

Valsetz Falls on Siletz River-70 ft.

### **Tillamook County**

### **Minimum 10 waterfalls**

**Munson Creek Falls on Munson Creek - 266 feet in height. The falls are tiered type.**

Munson Creek Falls are the tallest in the Coast Range. They are in Munson Falls State Park. The falls were named for Goran Munson, a settler from Michigan who homesteaded in 1889 near the falls. The trails were built as a part of a youth program in 1960-62. The lower trail was redone in 1978-79. The best time to see the falls is in late winter or early spring. Directions: Seven miles south of Tillamook on Highway 101 is a signed turn for Munson Falls Park. Go on this road for about 1.6 miles following the State Park signs. The lower trail is the easier but not wheelchair accessible. The upper trail starts out about 10 feet along the lower trail. The upper trail is not maintained but has a very good view of the falls.

Other waterfalls in Tillamook County:

Alder Glen Falls on unnamed stream-25 ft.; Clarence Creek Falls on Clarence Creek-45 ft.; Nehalem Falls on Nehalem River-5-10 ft.; Bridge Creek Falls on Bridge Creek-45 ft.; Lower Bridge Creek Falls on Bridge Creek-30 ft.; Fern Rock Creek Falls on Fern Rock Creek-40 ft.; University Falls on Elliott Creek-65 ft.; Pheasant Falls on unnamed creek-100 ft.; Chitwood Creek Falls on Chitwood Creek

### **Wallowa County**

#### **Minimum 4 waterfalls**

**Wallowa Falls on West Fork Wallowa River - 30-50 feet in height. The falls are punchbowl type.**

Wallowa is a Nez Perce Indian word used to describe a structure of stakes set in a triangle, used to support a network of sticks called lacallas. This is used for catching fish. These traps were put in the Wallowa River below the outlet of Wallowa Lake. Lewis and Clark named this river Wil-le-wah and also gave the name to a tribe of Indians. There maybe other meanings for the word Wallowa. Directions: Go through Joseph on Highway 82 to Wallowa Lake State Park. In the park turn left (south) toward the picnic area. The West Fork Trail #1820, which goes toward Ice Lake, starts at the picnic area. There is a footbridge on the trail that goes across the East Fork Wallowa River. Then go to a rocky outcrop adjacent to the West Fork in 1/10 mile. From this point follow the ridge a short distance downstream to a well worn path above the river. You can see the river and falls from this point.

Other waterfalls in Wallowa County:

Adam Creek Falls on Adam Creek; Fall Creek Falls on Fall Creek; Imnaha Falls on Imnaha River-10 ft.

### **Wasco County**

#### **Minimum 7 waterfalls**

**Mosier Creek Falls on Mosier Creek - 125 feet in height. The falls are horsetail type.**

The creek, falls, and town are named after Jonah H. Mosier, who started the community in 1853-54 by settling on a claim near the mouth of Mosier Creek. Mr. and Mrs. Mosier also ran a impromptu stage station for travelers to stop at. He also served in the Oregon legislature. Directions: Turn off I-84 at Mosier (exit 69). Drive through Mosier and cross the bridge over Mosier Creek and park on the left side of the road. The path is marked by a yellow bench labeled "Mosier Pioneer Cemetery". Go through the cemetery towards the canyon. Walk upstream to the falls. It is about .25 mile from the road.

Other waterfalls in Wasco County:

White River Falls (also known as Tygh Valley Falls) on White River-80 ft.; Middle River Falls on White River-25-35 ft.; Lower White River Falls on White River-25-35 ft.; Cushing Falls on Fifteenmile Creek-10-15 ft.; Sherar's Falls on Deschutes River-15 ft.; Petersburg Falls-5-10 ft.

### **Washington County**

#### **Minimum 2 waterfalls**

**Lee Falls on Tualatin River - 25 feet in height.**

Directions: Take Highway 47 to Patton Valley Road and go to Cherry Grove. Go through Cherry Grove to Lee Falls Road. After the residential area go 2.3 miles to a locked gate. Park there and walk down the crushed rock road to the falls. The gate may have a No Trespassing sign on it. There are 3 other falls above Lee Falls but they are off limits.

Other waterfalls in Washington County:

Little Lee Falls on Tualatin River-5-10 ft.

### **Yamhill County**

#### **Minimum 2 waterfalls**

**Niagara Falls on Pheasant Creek - 130 feet in height. The falls are plunge type.**

These falls were named after nearby Niagara Point. Niagara Falls is close to the border of

Yamhill/Tillamook County line, and is close to Pheasant Falls in Tillamook County. Best to see these falls in the spring. Directions: Turn left (north) off Highway 101 at Beaver, onto Blaine-Little Nestucca River Road. Go 11.8 miles to Clarence Creek Road turn right instead of left onto Clarence Creek Road. This road goes through a field and there is a sign "Niagara Falls Trail 4.2". Go on this logging road for 4.2 miles till you come to a T intersection, turn right and go 7/10 mile to parking area. Niagara Falls is 1 mile from the parking lot.

Other waterfalls in Yamhill County:

Gunaldo Falls on unnamed creek going into Sour Grass Creek-65 ft. This one is also on the border of Yamhill/Tillamook County line.

## SOURCES

- “Romance of Waterfalls”** by Barbara L. Bloom and Garry W. Cohen
- “A Waterfall Lover’s Guide to the Pacific Northwest”** by Gregory A. Plumb 1<sup>st</sup>, 2<sup>nd</sup>, & 3<sup>rd</sup> Editions
- “Oregon Geographic Names”** by Lewis A. McArthur 6<sup>th</sup> Edition
- “Exploring Oregon’s Wild Area”** by William L. Sullivan 1<sup>st</sup> & 3<sup>rd</sup> Editions
- “100 Hikes in Southern Oregon”** by William L. Sullivan
- “Soggy Sneakers”** by Willamette Kayak & Canoe Club 3<sup>rd</sup> Edition
- “A Walking Guide to Oregon’s Ancient Forests”** by Wendell Wood
- “Thundering Waters”** Umpqua National Forest & Roseburg District BLM (pamphlet)
- “Rogue-Umpqua Scenic Byway”** by the Forest Service & BLM (pamphlet)

### Internet Sites

<http://www.wpnw.addr.com/drainages.htm>

<http://www.waterfallsnorthwest.com>

<http://home.pacifier.com>

<http://www.waterfallswest.com>

<http://www.registerguard.com/discover>

Discovery 2003

### A Special Thank You

Thanks go to Ken Knapp for all the hours he put in to help find waterfalls on the map, what counties they were in, and check on some directions.

Thanks go to Margaret Edmonson, Church Secretary for the Sheridan Nazarene Church. She did the transparencies that were used in teaching the lesson at the Annual Meeting in 2003.

## **Falling Waters Quiz**

1. There are Steamboat Falls and Creeks in Oregon. The meaning of steamboat is when mines have been worked out, or where prospects do not come up to expectations, either naturally or through fraud, they are said by miners to have been “steam boated”. This meaning applies to the falls and creeks.
  - A. True
  - B. False
  
2. What is the most popular name for waterfalls and creeks?
  - A. Bridge
  - B. Fall
  - C. Eagle
  
3. Cascade Head got its name when sailors noticed a waterfall cascading directly into the ocean.
  - A. True
  - B. False
  
4. What river is Rainie Falls on?
  - A. Rogue River in Josephine County
  - B. Deschutes River in Deschutes County
  - C. Sanitam River in Linn County
  
5. What is the name of the tallest waterfall in Oregon?
  - A. Mist Falls
  - B. Salt Creek Falls
  - C. Multnomah Falls
  
6. The Disney movie “Homeward Bound” had these falls in the movie.
  - A. Youngs River Falls in Clatsop County
  - B. Sahalie Falls in Linn County
  - C. Wildwood Falls in Lane County
  
7. What is the biggest waterfall in Oregon?
  - A. Beaver Falls in Columbia County
  - B. Warm Springs Falls In Douglas County
  - C. Willamette Falls in Clackamas County
  
8. Annie Falls is in what park?
  - A. Crater Lake National Park in Klamath County
  - B. Silver Creek State Park in Marion County
  - C. Cascadia State Park in Linn County

9. What park in Oregon has 10 major waterfalls in it?
- A. Starvation Creek State Park in Hood River County
  - B. Cascadia State Park in Linn County
  - C. Silver Falls State Park in Marion County
10. What is the name of a man made falls?
- A. Tunnel Falls in Hood River County
  - B. Hole in the Wall Falls in Hood River County
  - C. Blue Hole Falls in Lane County